



Guidelines „Assessing RDP impacts and achievements in 2019“

State of play, content, next steps

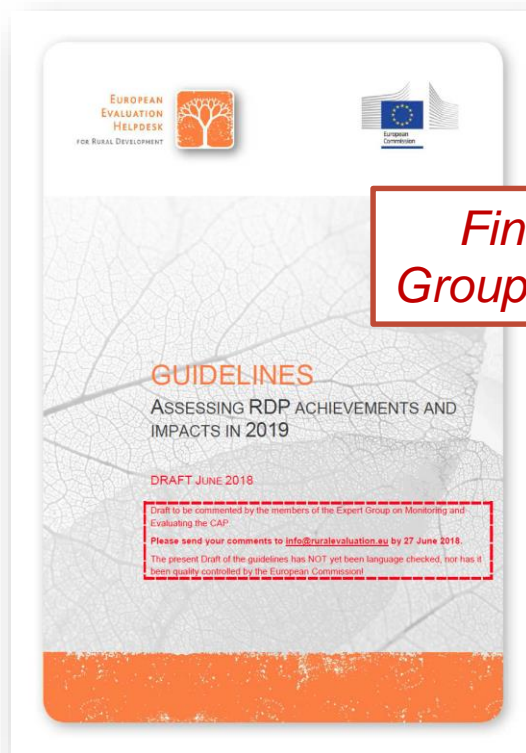
Hannes Wimmer, **Evaluation Helpdesk**

DeGEval – Spring Workshop, Hamburg 14-15 June 2018

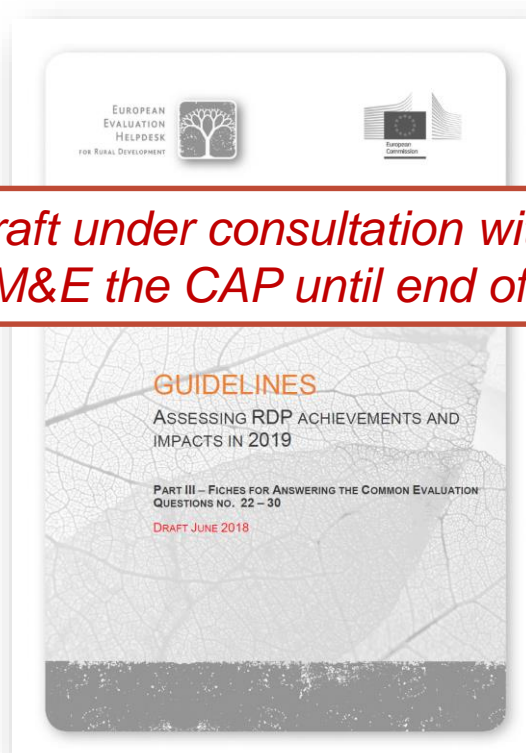
POWERED BY



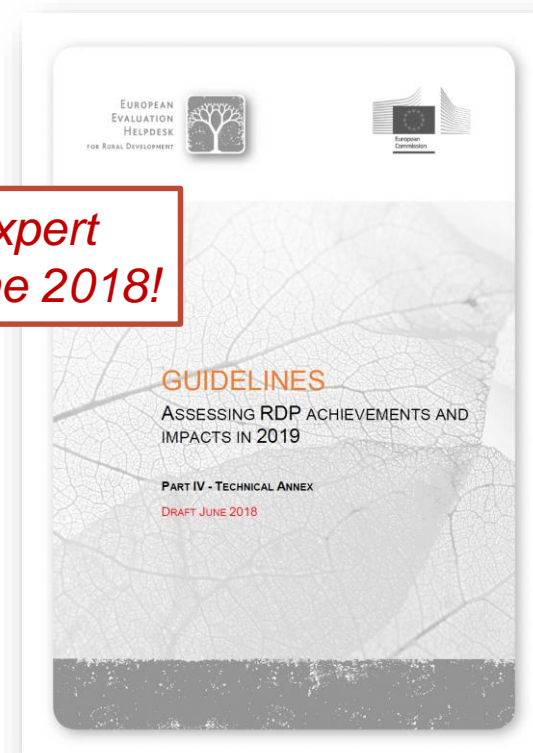
Structure of the Draft Guidelines



Part I: Requirements
Part II: Approaches for
assessing RDP impacts



Part III: Fiches for
answering the CEQ no.
22-30



Part VI: Technical Annex

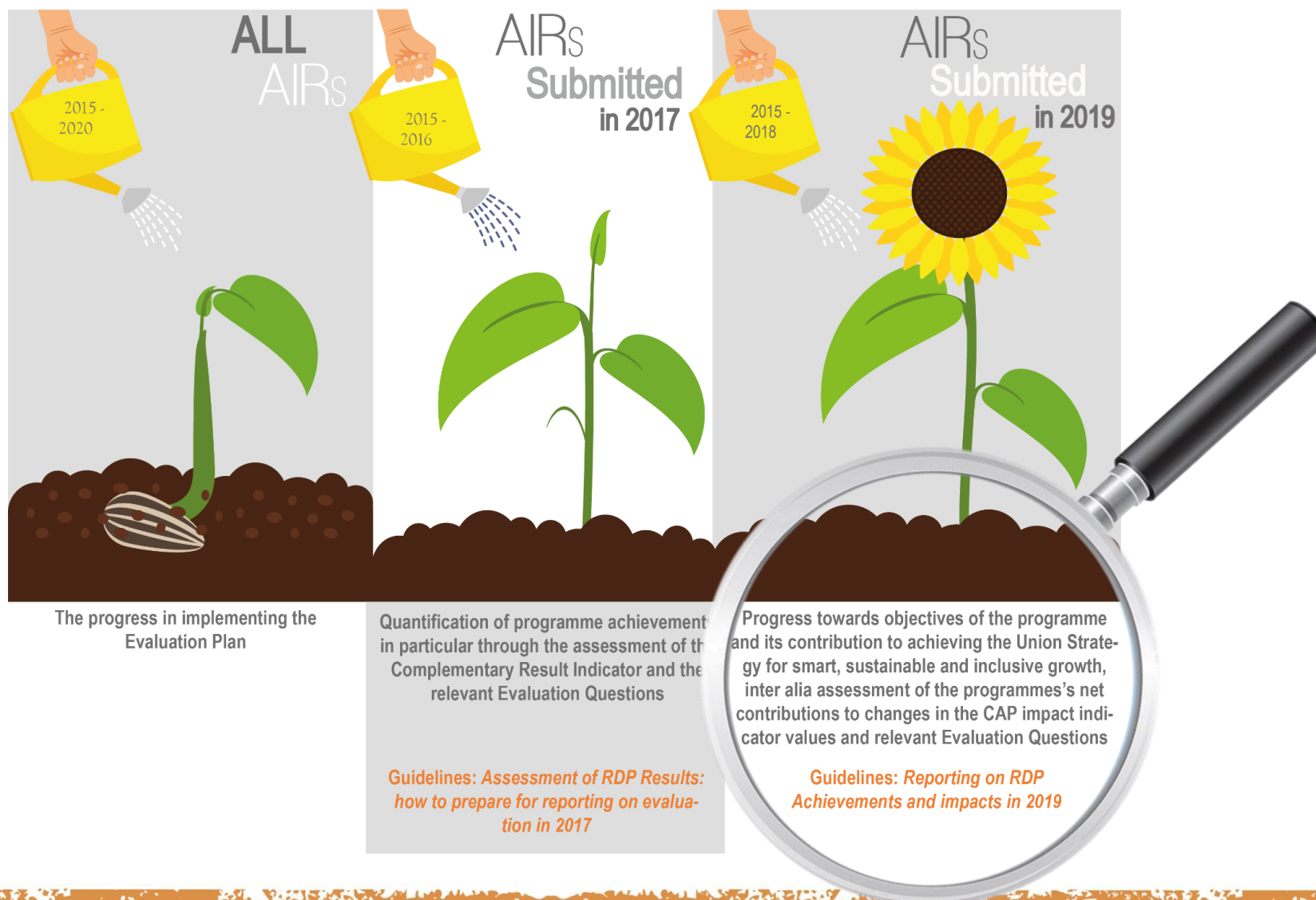
- Additional indicators
- Descriptions of methods
- Adequateness of approaches

Final Draft under consultation with Expert Group on M&E the CAP until end of June 2018!



PART I: What needs to be reported on evaluation in the AIR in 2019

Main focus of evaluation in 2019





Number	Indicator
Sector	
I.01	Agricultural entrepreneurial income
I.02	Agricultural factor income
I.03	Total factor productivity in agriculture
Environment	
I.07	Emissions from agriculture
I.08	Farmland bird index
I.09	High nature value (HNV) farming
I.10	Water abstraction in agriculture
I.11	Water quality
I.12	Soil organic matter in arable land
I.13	Soil erosion by water
Socio-economic	
I.14	Rural employment rate
I.15	Rural employment rate
I.16	Rural GDP per capita



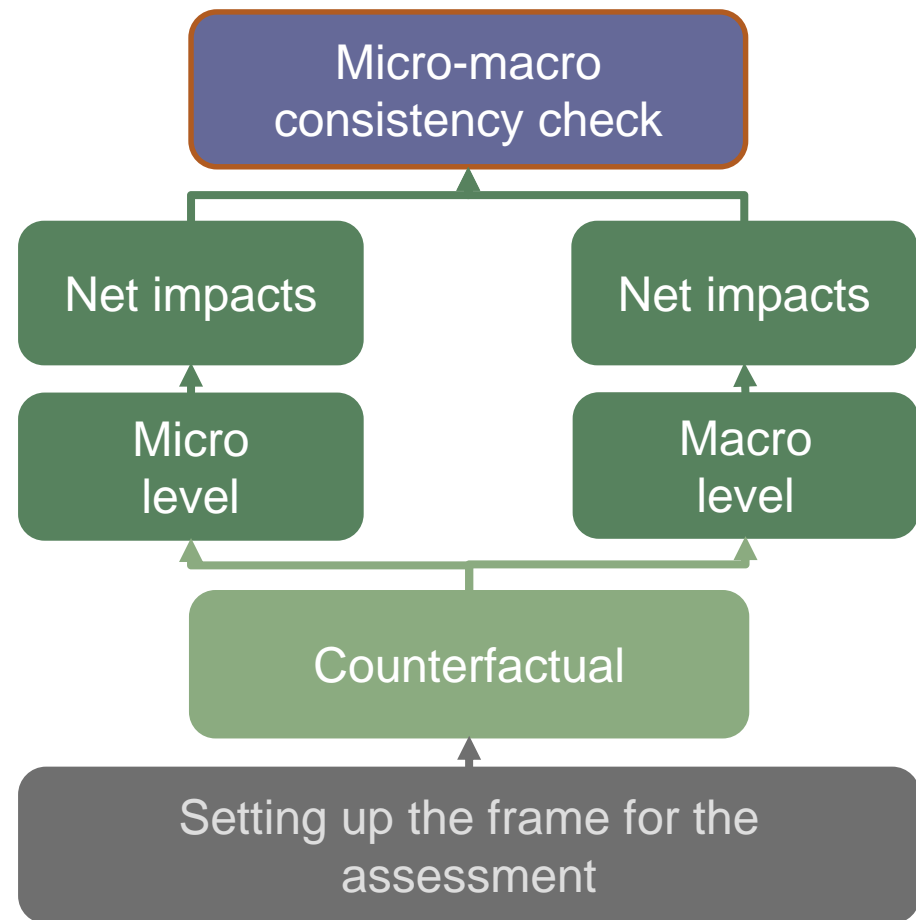
PART II: Choosing appropriate evaluation approaches

How to choose adequate evaluation approaches?

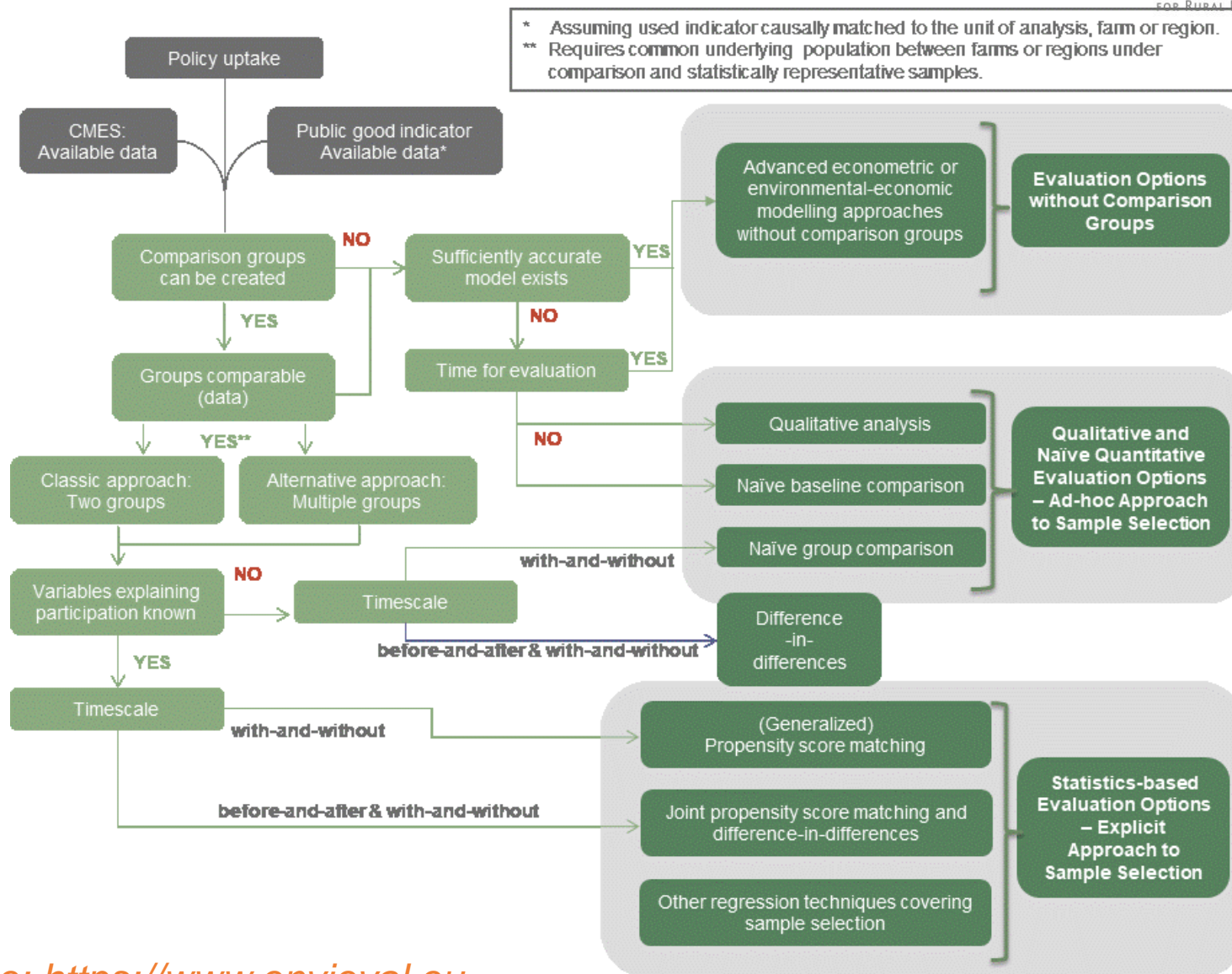


Logic models

- Serve as decision tools (to match methods with data)
- Underlying decision trees provide flexibility to consider diversity across MS
- Guide to new approaches
- Help to plan and predict evaluation outcomes in an given context



For more information on logic models see FP7-project Envieval (<https://www.envieval.eu/>)



Source: <https://www.envieval.eu>

What approaches do the guidelines suggest?

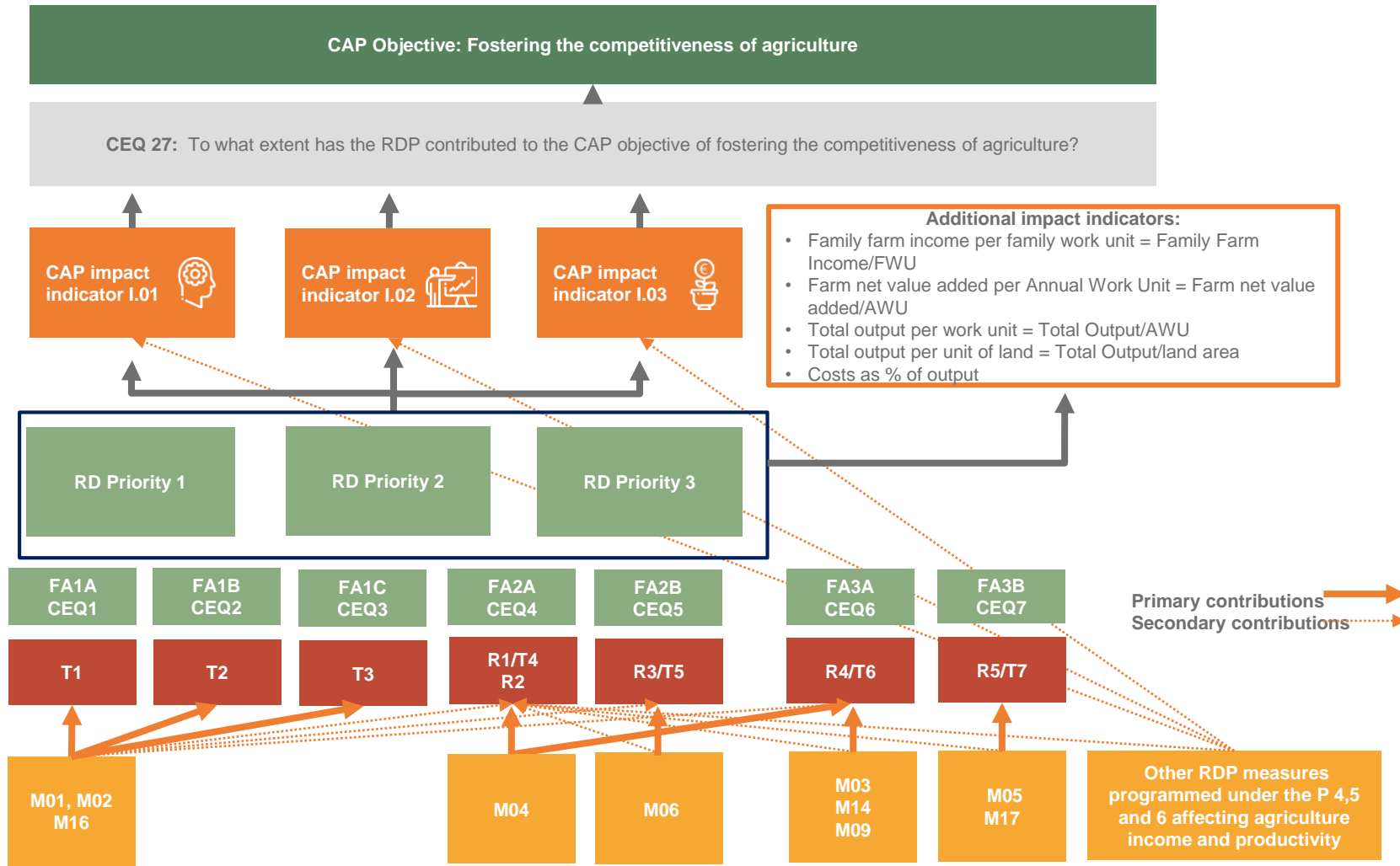


- **Approach A:** example of optimal evaluation approach
 - To be used if high quality data are available.
 - Should be the aim for ex post evaluation (when data gaps are closed)
- **Approach B:** example of approach acceptable in 2019
 - less data-demanding.
 - To be used in case of low programme uptake, small programmes, or if other factors hinder application of optimal approach (data, resource-gaps)



PART II: Approaches for assessing RDP achievements in 2019 and ex post – sector impacts

CAP intervention logic and indicator I.01 “Agricultural entrepreneurial income”, I.02 Agricultural factor income, I.03 “Total factor productivity in agriculture”





Unit of assessment

Micro-level assessment

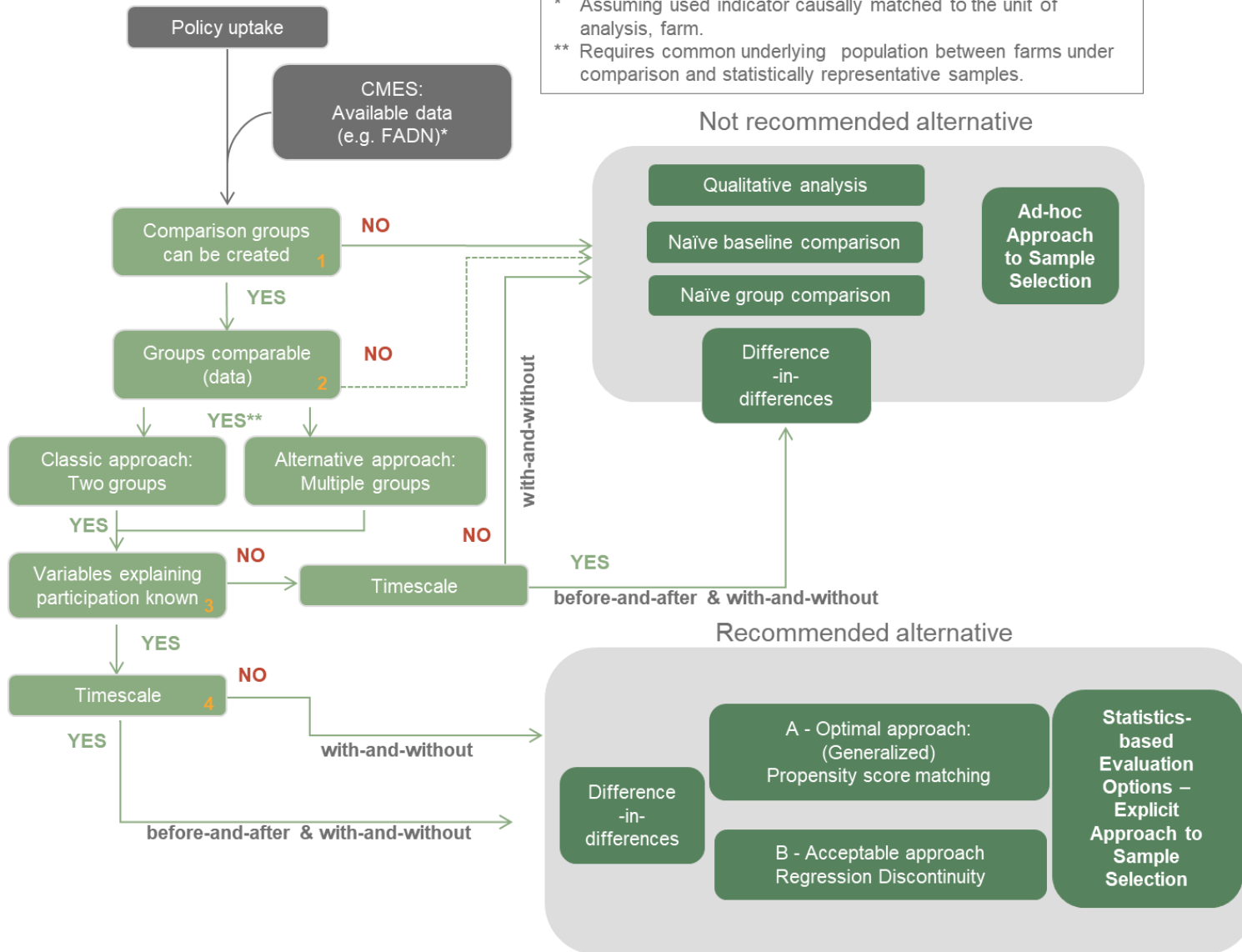
Agriculture holding(s)
which received a support
and its counterpart
holding(s) which did not get
such support.

Macro-level assessment

Agriculture sector within
the RDP territory



* Assuming used indicator causally matched to the unit of analysis, farm.
 ** Requires common underlying population between farms under comparison and statistically representative samples.





Next steps

- **June:** Guidelines are being commented by the members of the Expert Group on Monitoring and Evaluating the CAP
- **July:** Guidelines are revised by Helpdesk and validated by EC
- **August:** Guidelines are published
- **September:** Helpdesk finalizes Yearly Capacity Building material related to TWG-5 Guidelines
- **Oct/Nov.:** A Good Practice Workshop „Methods for assessing RDP impacts” is conducted
- **Oct.-Dec.:** Yearly Capacity Building events are carried out in Member States



Thank you for your attention!

European Evaluation Helpdesk for Rural Development
Boulevard Saint Michel 77-79
B-1040 Brussels
Tel. +32 2 7375130
E-mail info@ruralevaluation.eu
<http://enrd.ec.europa.eu/evaluation>

Follow us on  [ENRD_EVALUATION](#)